

# Opti Light



**Reference:**

**OptiLight Full side audit station**

**Document :**

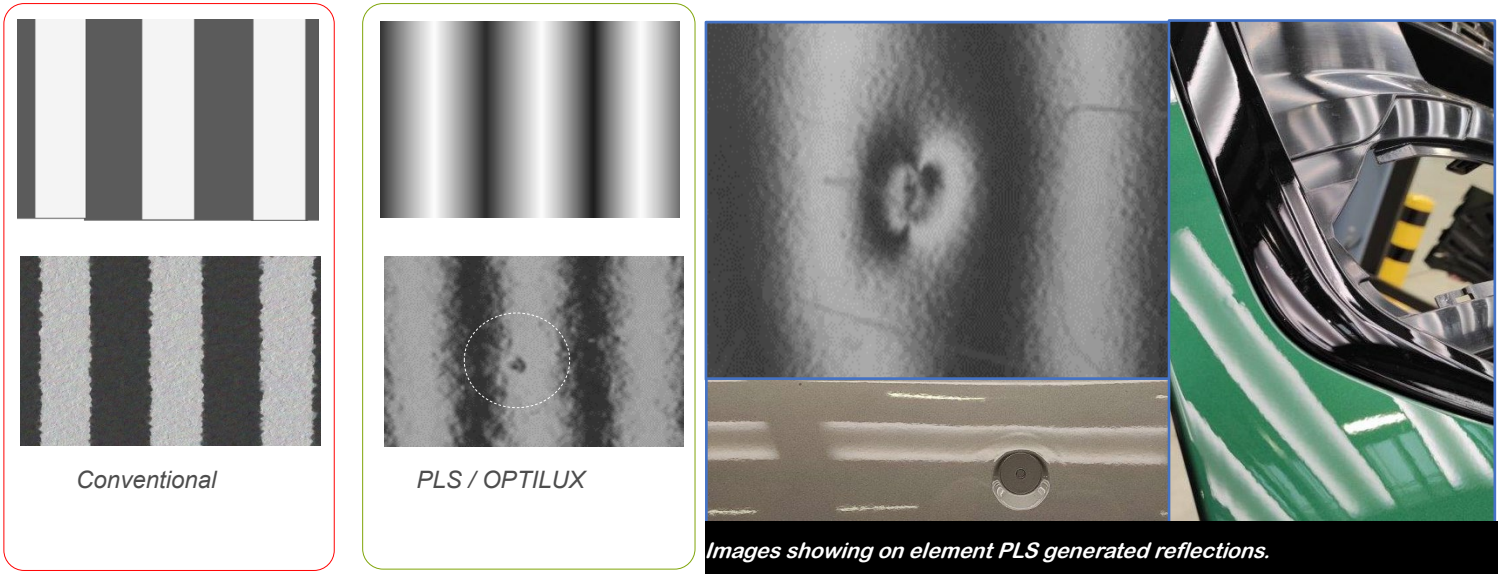
## TECHNICAL SPECIFICATIONS

### PLS lighting systems

The here described system is equipped with the VIRELUX proprietary PLS light box design. It features a dedicated, sinusoidal profile light emission, improving operator ergonomy and visual accuracy.

Explanation: small defects are more visible in grey level transition zones, than in stepped profile lighting, whilst additionally reducing the needed operator movements.

This generally translates to higher detection rates, and lower operator fatigue effects.



### Full side audit station overview

The full side audit station is designed for the inspection of one complete side of a vehicle, including its roof. The reduced footprint of the equipment allows for installation in smaller workshops.

The equipment is adjustable to different working configuration:

Right



Left



## Possible equipment configurations:



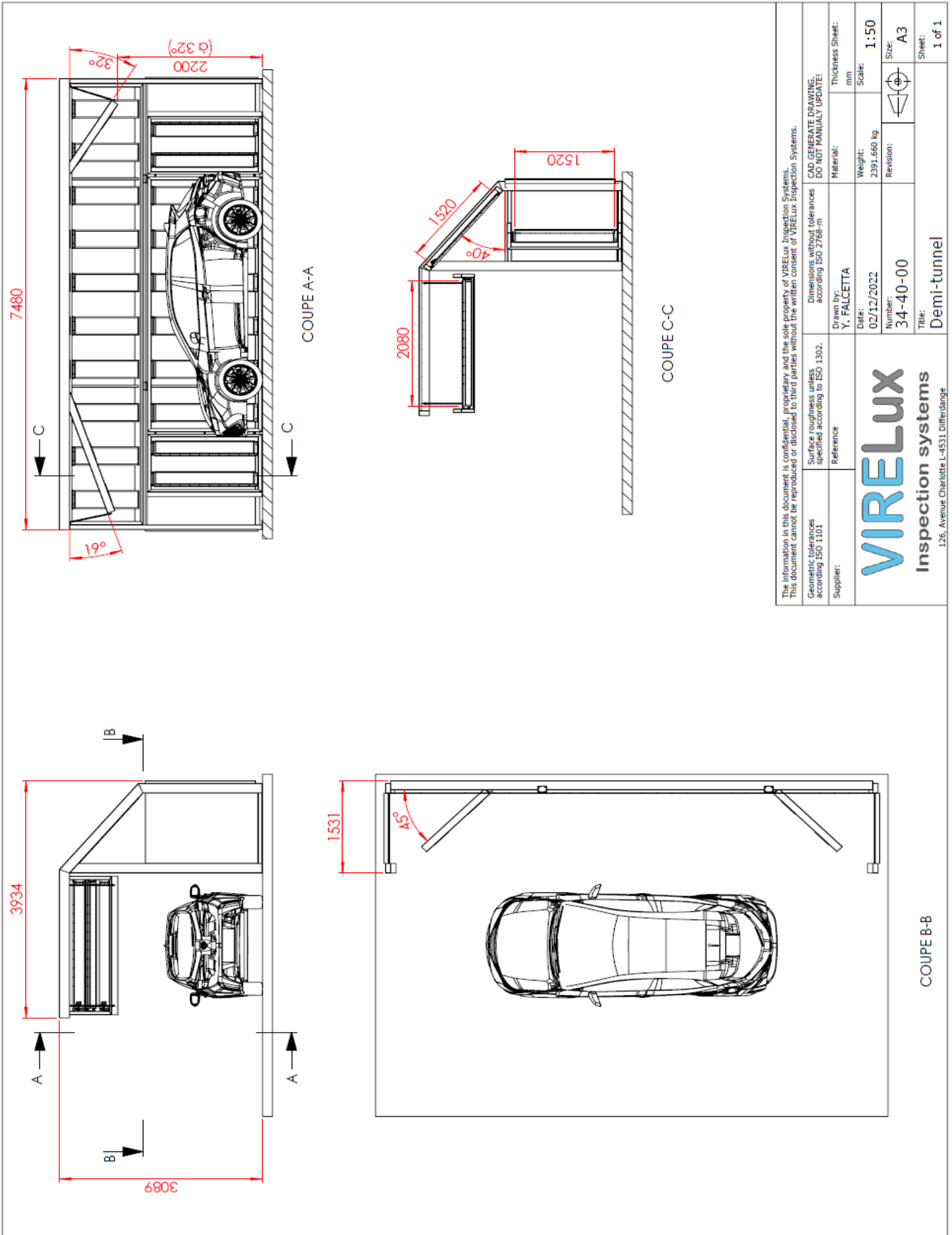
## Technical Data:

Sinusoïde light colour:	4.000 K
Double sinusoïde composite pattern:	4.000 K - 3.000 K – 4.000 K
LED Type:	SMD 2835
Led Lifetime:	>40.000 h
Luminosity:	Adjustable from 1.000-3.000 Lux at 1m
Dimmable:	PWM , stepless
Power supply:	400V – 16A
Top Flaps :	Motorized
Side Flaps :	Manual
LBM type :	LBM15
Number of LBM's :	30
Overall weight:	2.440kg
Overall dimensions (HxWxT):	7.480 x 3.934 x 3.089 mm
Rated power:	2.800 W

## Optional Features:

### Composite pattern

Composite pattern including an additional sinusoidal center line in yellow color.



The information in this document is confidential, proprietary and the sole property of VIRELUX Inspection Systems. This document cannot be reproduced or disclosed to third parties without the written consent of VIRELUX Inspection Systems.

CAD GENERATE DRAWING. DO NOT MANUALLY UPDATE!

Geometric tolerances according ISO 1101	Supplier:	Reference	Material:	Thickness Sheet: mm
Surface roughness unless specified according to ISO 1302.	Y. FALCETTA		Weight: 2391,660 kg	Scale: 1:50
	Date: 02/12/2022		Revision: 34-40-00	Size: A3
	Drawn by:		Title: Demi-tunnel	Sheet: 1 of 1

**VIRELUX**  
Inspection systems  
126, Avenue Charlotte L-4531 Differdange