

Opti Light



Reference:

OptiLight Corner audit station

Document :

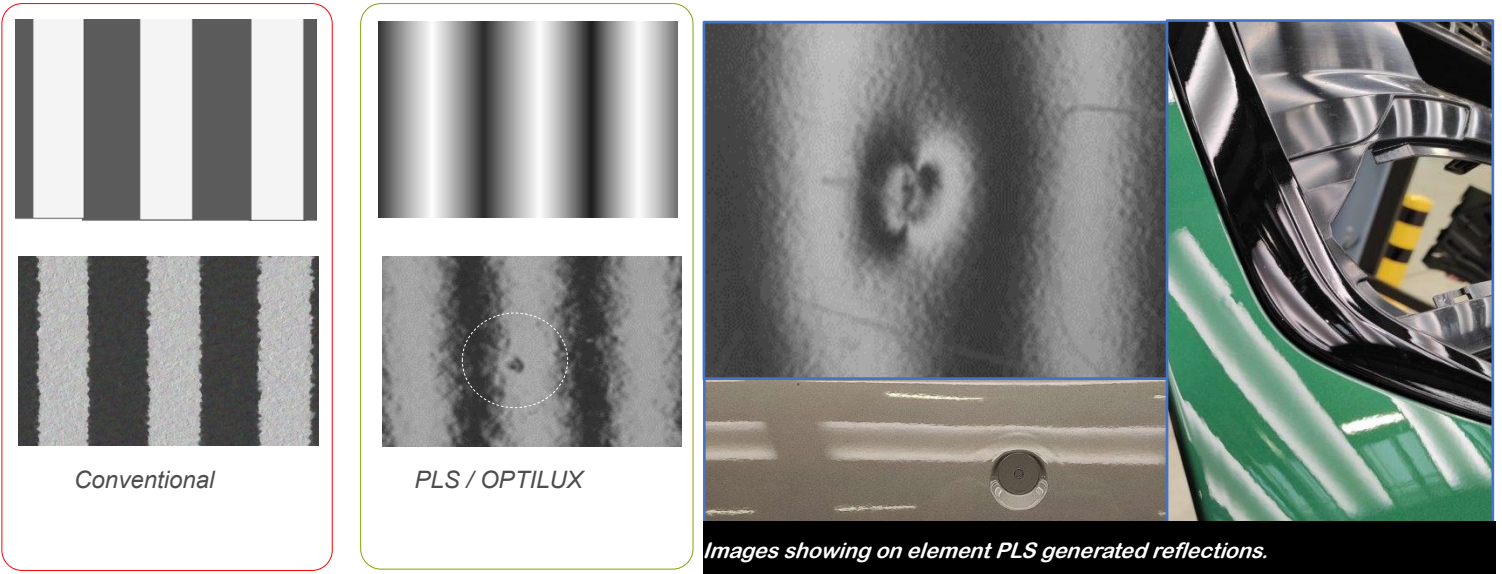
TECHNICAL SPECIFICATIONS

PLS lighting systems

The here described system is equipped with the VIRELUX proprietary PLS light box design. It features a dedicated, sinusoidal profile light emission, improving operator ergonomy and visual accuracy.

Explanation: small defects are more visible in grey level transition zones, than in stepped profile lighting, whilst additionally reducing the needed operator movements.

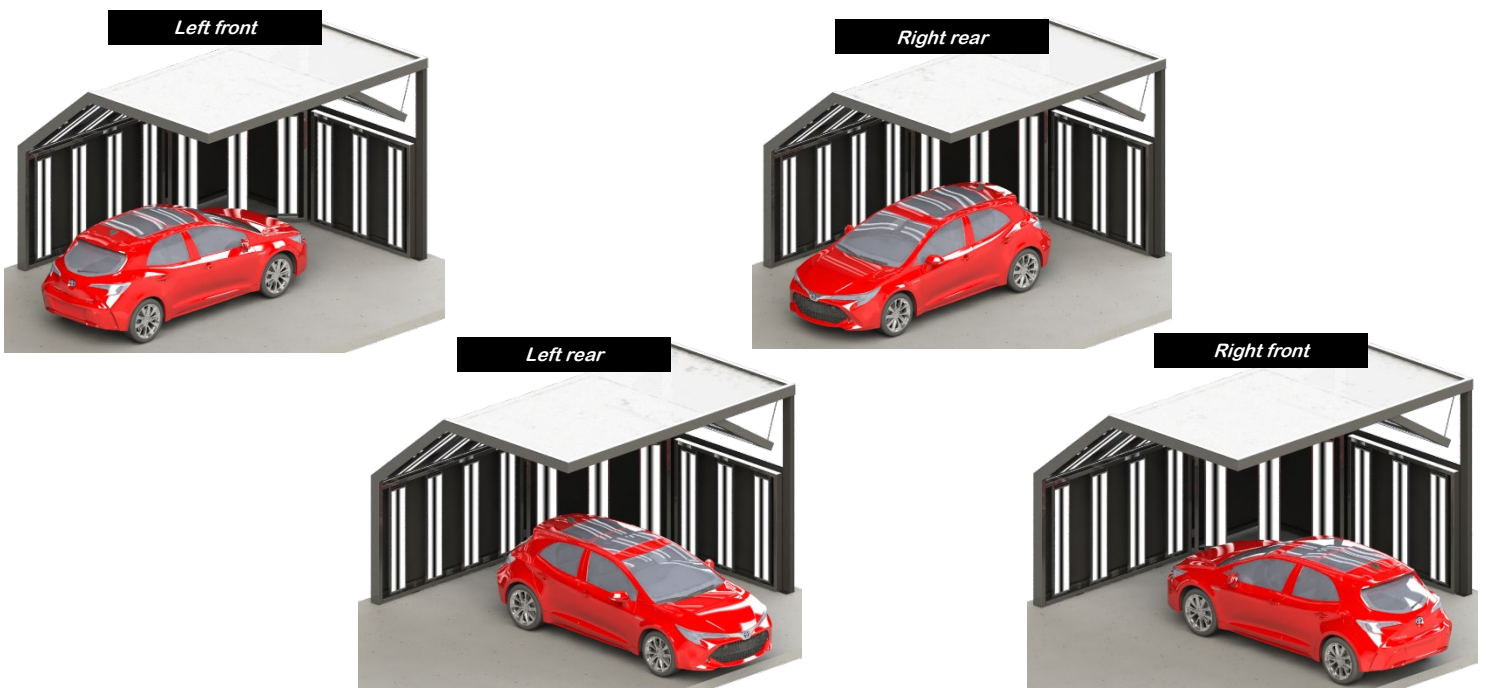
This generally translates to higher detection rates, and lower operator fatigue effects.



Panel audit station overview

The corner audit station is designed for the inspection of a few different bodywork elements, including a larger part of the vehicle's roof. The reduced footprint of the equipment allows for installation in smaller workshops.

The equipment is adjustable to different working configuration:



Possible equipment configurations:



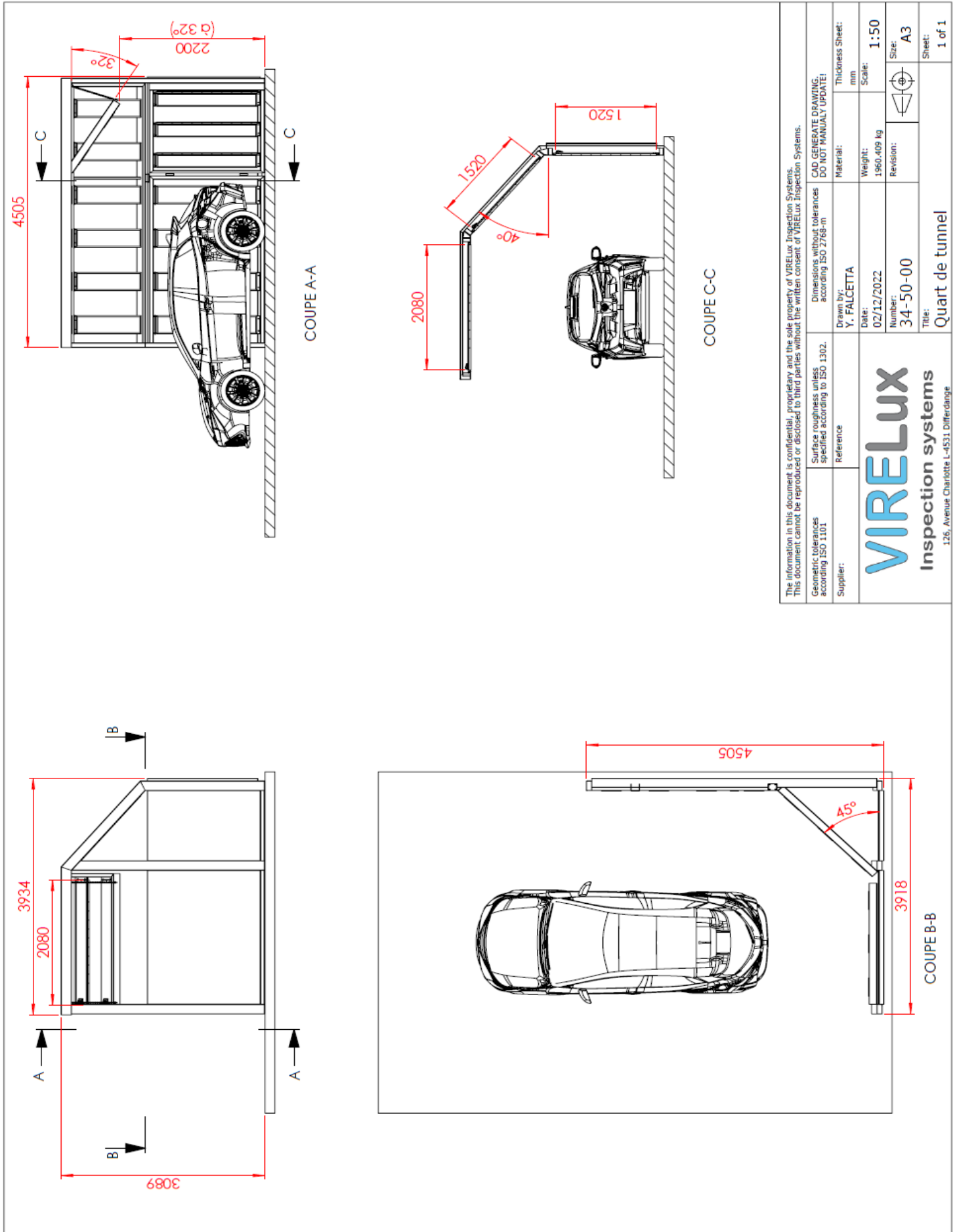
Technical Data:

Sinusoïde light colour:	4.000 K
Double sinusoïde composite pattern:	4.000 K - 3.000 K – 4.000 K
LED Type:	SMD 2835
Led Lifetime:	>40.000 h
Luminosity:	Adjustable from 1.000-3.000 Lux at 1m
Dimmable:	PWM , stepless
Power supply:	400V – 16A
Top Flaps :	Motorized
Side Flaps :	Manual
LBM type :	LBM15
Number of LBM's :	22
Overall weight:	1.960kg
Overall dimensions (HxWxT):	4.505x 3.918 x 3.089 mm
Rated power:	2.000 W

Optional Features:

Composite pattern

Composite pattern including an additional sinusoidal center line in yellow color.



The information in this document is confidential, proprietary and the sole property of VIRELUX Inspection Systems. This document cannot be reproduced or disclosed to third parties without the written consent of VIRELUX Inspection Systems.

Geometrical tolerances according to ISO 1101	Supplier:	Surface roughness unless specified according to ISO 1302.	Reference:	Dimensions without tolerances according to ISO 2768-m.	CAD GENERATE DRAWING: DO NOT MANUALLY UPDATE!
				Drawn by: Y. FALCETTA	Material:
				Date: 02/12/2022	Weight: 1960.409 kg
				Number: 34-50-00	Scale: 1:50
					Revision:
					Size: A3
					Thickness Sheet:
					Sheet: 1 of 1

VIRELUX
Inspection systems
126, Avenue Charlotte L-4531 Differdange

Title: Quart de tunnel